

Radio Tubular Motor Specification



All control support 433MHz & 868MHz
All control support 230V/50Hz & 120V/60Hz



R: Radio
Mechanic Limit + Built-in Receiver

By:
35R, 45R, 45RM,
59R, 59RM, 45RQ

Version No. A/00



Technical support

1、

One channel of emitter can control
20 receivers at most at the same time.

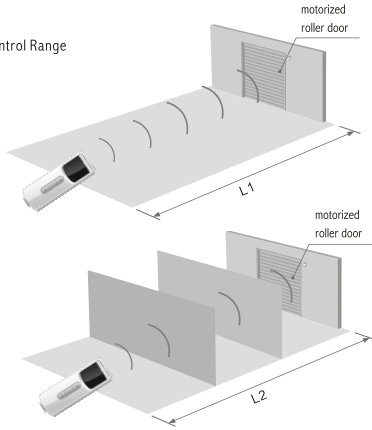


One R motor maximum can store 20 channels, over
20 channels, if still need add new channel, it will cover
NO.20th channel.



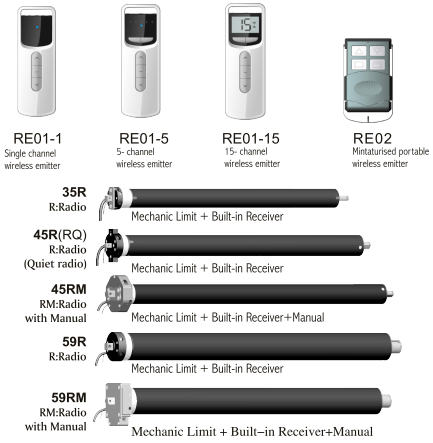
- In programming emitter and R type motor, every time press the key, motor will whistle and turn left and right as a signal (not press any key within 6 seconds after the whistle, the motor will turn to original state). After the success of the set up, motor continuous whistle many times and turn left and right as signal.
- Receiver in the mode of dot function, press up key or down key with 2 seconds, emitter control motor working in dot function; if continuous press more than 2 seconds motor will last working.
- Group control channel match code is unworkable, while function of dot-move, emitter-added and emitter-cancel still effective.

3、Control Range



	L1 open	L2 partition	Emission frequency
230V/50Hz	200m	35m	433.92MHz
120V/60Hz	200m	35m	

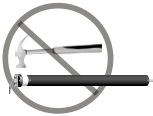
4、Matchable emitter and motor



Attention:



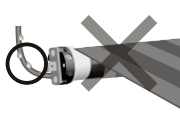
Far away water



Don't striking



Don't drilling



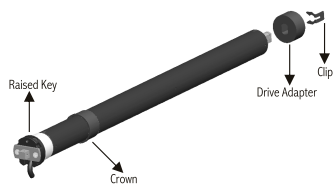
Preventing water intake during installation.



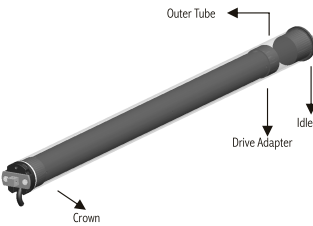
Technical support

ACCESSORIES ASSEMBLY

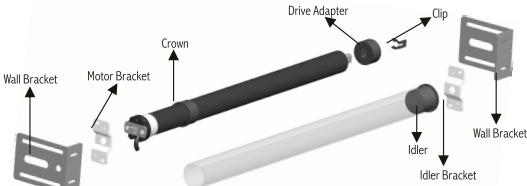
1. Fit the crown to the motor body enable crown can work with Raised Key Assembly drive adapter, use clip to lock drive adapter and outer shaft.



2. Assemble outer tube and idler.



3. limit head should be assemble to motor bracket, idler should be assemble to idler bracket.



Attention: Do not drill the hole between crown and gear ring.



Technical support

Wire Connection



Switch off



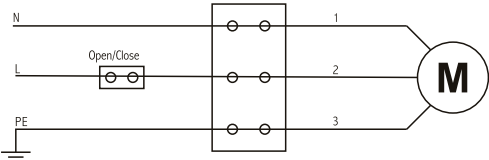
230V/50Hz / 120V/60Hz according
to product nameplate

AC 230V/50HZ

1 Blue=Neutral
2 Brown=Direction
3 Green/Yellow=Earth

AC 120V/60HZ

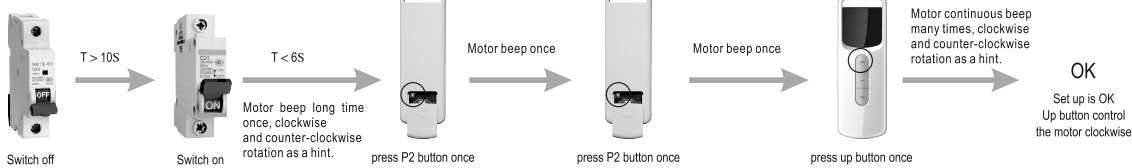
1 White=Neutral
2 Black=Direction
3 Green=Earth



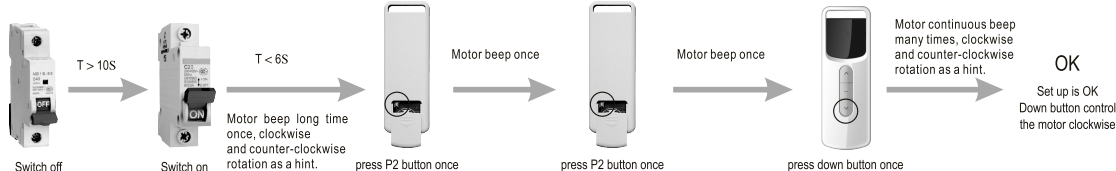
Additional Funtion:

Programming the first emitter

The first method:



The second method:



- The interval of each button must within 6 seconds of re-setting otherwise the system will restore the original state.
- Delete all the datas of motor when the new emitter has been programmed.

Radio Tubular Motor Specification



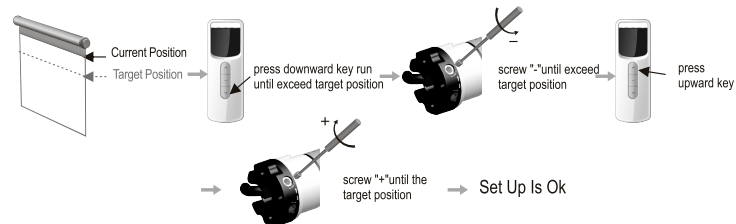
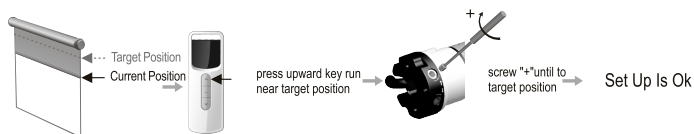
Set The Limitation

Up and down limitation position this is where the roller blinds stop automatically.

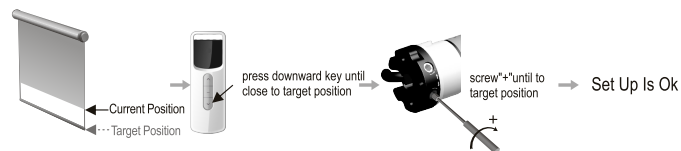
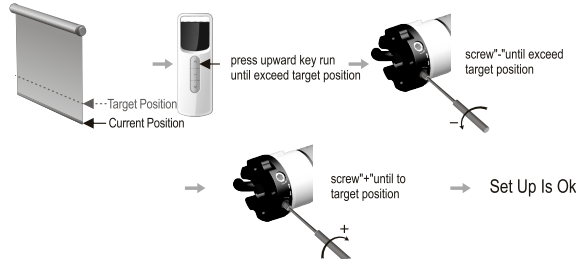
⚠ When motor doesn't work, stop rotating red or white worm with regulator.

Additional Functon:

≈ **Up Position Set Up** (White Screw Adjust Upward Limitation Position):



≈ **Down Position Set Up** (Red Screw Adjust Downward Limitation Position):

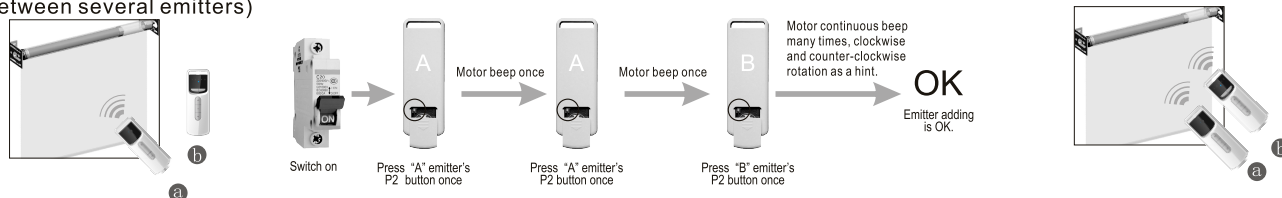


Add Emitter

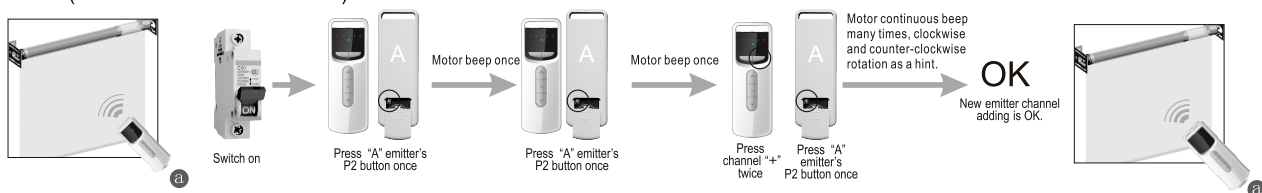
Additional Functon:

Add emitter (between several emitters)

⚠ The interval of each button must within 6 seconds of re-setting otherwise the system will restore the original state.



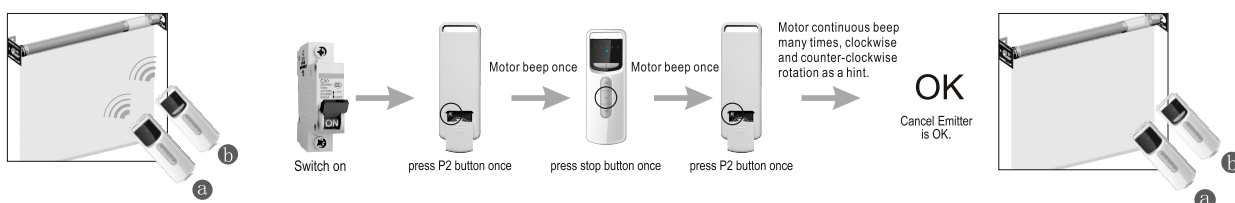
Add emitter channel(one multi-channel emitter)



Cancel Emitter

Additional Functon:

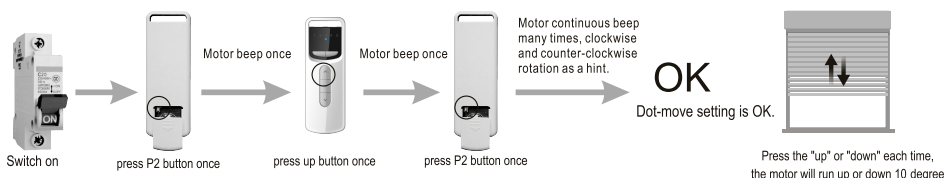
⚠ The interval of each button must within 6 seconds of re-setting otherwise the system will restore the original state.
Canceling emitter is that remove all the emitter memory of the motor.



Dot-move setting

Additional Functon:

⚠ The interval of each button must within 6 seconds of re-setting otherwise the system will restore the original state.
Repeat this setting, the dot-move function is cancelled.



Attention:

Common failures and solutions

	Fail-phenomena	Failure causes	Solutions failure recovery
1	Press up button, roller blinds run down	Programming direction is wrong	Use another way to reset up
2	Witch on, the motor runs in one-way operation	Inside limit switch of motor doesn't open	Crown running one circle in the opposite direction of the motor, then it's ok
3	Motor starts slowly or not work after connect power	1. Power voltage is low 2. Overload 3. Improper installation 4. Wiring error	1. Adjust the power to rated data 2. Change another motor that match with the load 3. Check if accessoires were properly installed 4. Check circuit and correct wiring connecting
4	Motor stops suddenly during running	1. Motor has entered into a state of overheating protection 2. Power cut 3. Enter into the limit point	1. After about 20 minutes motor automatic recovery to normal working condition 2. After power on can reworkable 3. Whether you need to adjust limit screw or not, depending on the state
5	Abnormal sound during operation	Outer tube is too long, led the rolling blinds connects with both sides of bracket too tightly	If idler is active, propering make the tube shorter to avoid too tight status