

Standard / Manual

Tubular Motor Installation Instructions

Version Number: V.13/0701 SMS01002 A/02



Support To: 35S, 45S/M, 59S/M

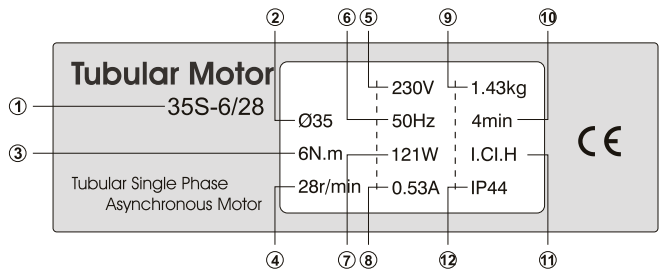
S: Standard Mechanic Limit

M: Standard Mechanic Limit (Including Manual Function)

▲ Notes Of Installation

- Do not let Water penetration into the motor;
- Do not let the rain water penetrate into the motor along the cable;
- Do not Strike, hit the motor and outer tube;
- Do not store the motor with strong acid, alkali or dirty & eroding materials;
- Do not start the motor frequently or overload it as it might reduces its operation life;
- Keep the product number and nameplate in safety place.

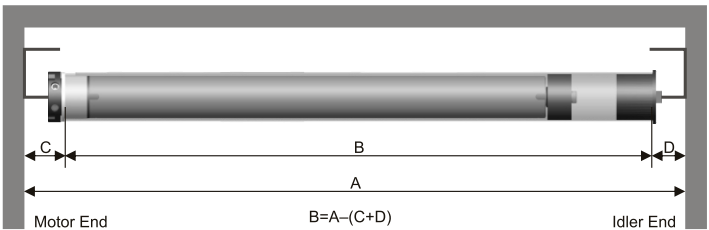
1. MOTOR NAMEPLATE



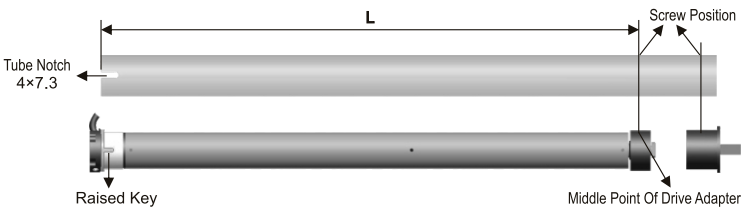
- | | |
|-------------------|---------------------|
| ① Motor Mode | ⑦ Rated Power |
| ② Tube Diameter | ⑧ Rated Current |
| ③ Rated Torque | ⑨ Motor Weight |
| ④ Rated Speed | ⑩ Work Time |
| ⑤ Rated Voltage | ⑪ Insulation Degree |
| ⑥ Rated Frequency | ⑫ Protection Degree |

2. TUBE PREPARATION

1. According to the length B to prepare the outer tube.
 $B=A-(C+D)$
A=Window or door totally width
C=Limit head thickness+Motor bracket thickness
D=Idler plate thickness+Idler bracket thickness(See Pic.1)
2. In the case use round tube without slot, outer tube screw position for drive adapter should be measured(L). Drilling two symmetric M4 sunk screw holes at the screw position. Meanwhile, in the suitable position drill two symmetric M4 sunk screw holes to fix outer tube and idler. (see pic.2)
3. In case use round tube without slot without use crown, in other side of outer tube open a slot enable outer tube can fit into the raised key. The slot dimension determined by the raised key of every different motor. (see pic.2)
4. Octagonal tube, slot tube do not need to drill hole.
5. Remove all burrs of the tube.



Pic.1

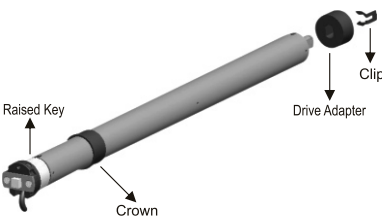


Pic.2

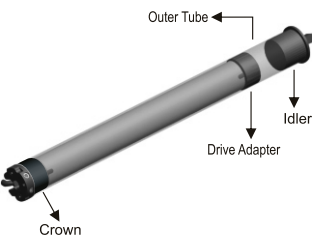
3. ACCESSORIES ASSEMBLY

Assembly Step:

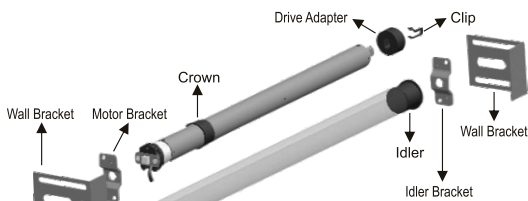
1. Fit the crown to the motor body enable crown can work with Raised Key. Assemble drive adapter, use clip to lock drive adapter and outer shaft.



2. Assemble outer tube and idler.

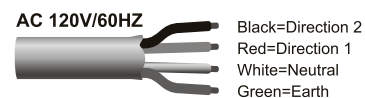
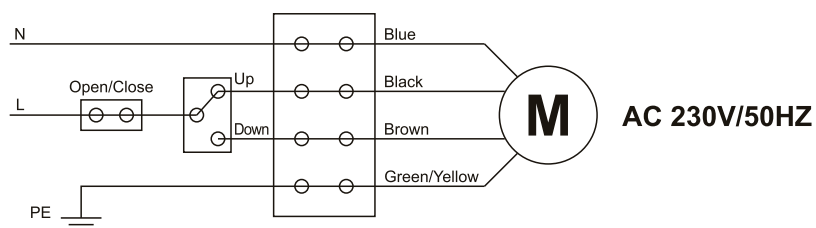


3. limit head should be assemble to motor bracket, idler should be assemble to idler bracket.



Attention: Do not drill the hole between crown and gear ring.

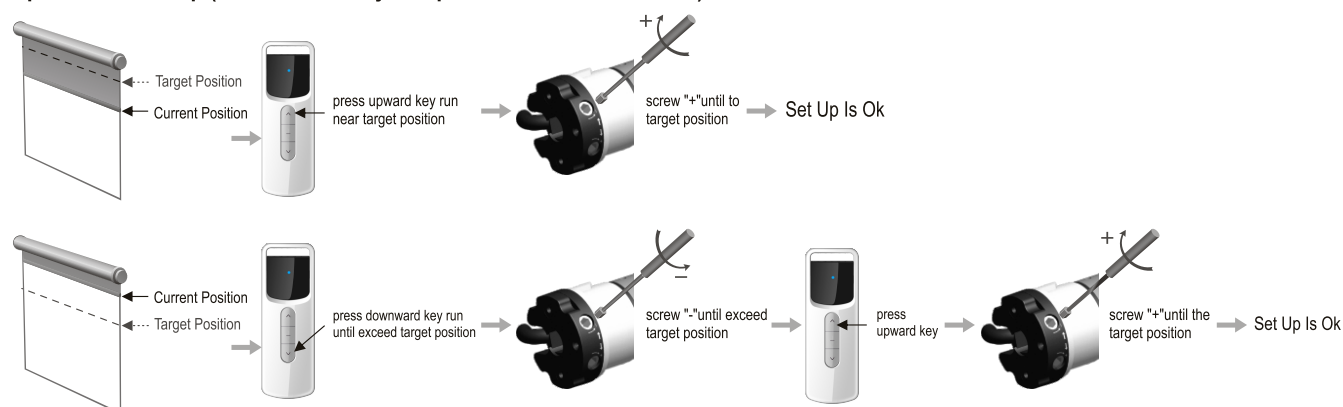
4. WIRE CONNECTION



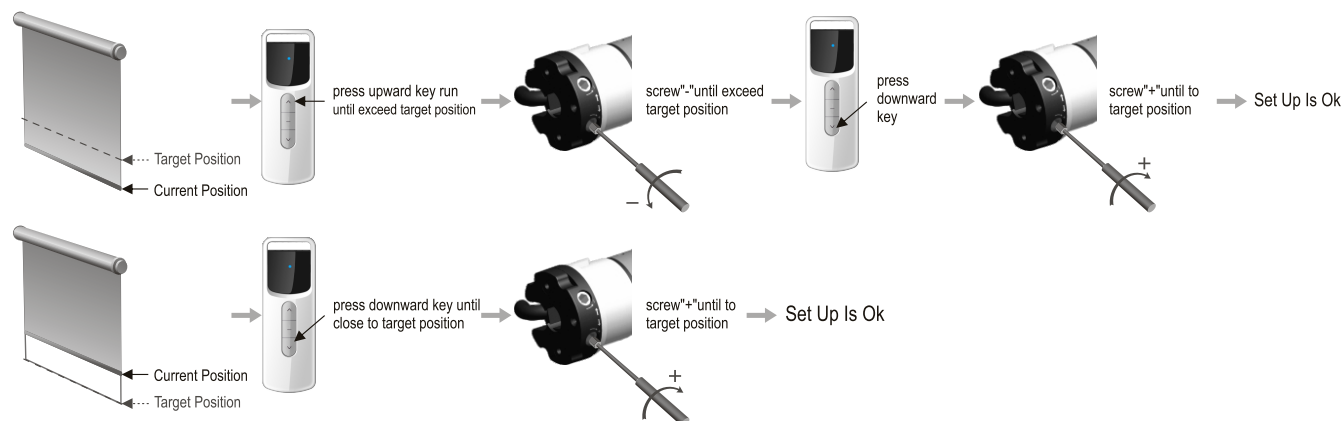
5. SET THE LIMITATION

Up and down limitation position this is where the roller blinds stop automatically.

⌘ Up Position Set Up (White Screw Adjust Upward Limitation Position):



⌘ Down Position Set Up (Red Screw Adjust Downward Limitation Position):



6. TROUBLE SHOOTING

No.	Trouble	The Cause Of The Malfunction	Solutions & Suggestions
1	Press upward button of controller, the shutter move downward	Wire connecting of the controller is wrong	Exchange the position of black wire and brown wire
2	Switch on, the motor run in one-way direction only	Inside limit switch of motor doesn't open	Rotation crown 1-2 cycles opposite direction of currently
3	Motor not work or work slowly after connect the power	1. Power supply not accord with rated voltage; 2. Overload; 3. Improper installation lead inside spare parts get stuck motor; 4. Both limit switches inside of motor not open.	1. Change motor to rated power supply; 2. Change the right N.m motor; 3. Check all parts of installation correctly; 4. Rotation the crown any direction 1-2 cycles.
4	Motor stop suddenly after running	1. Motor is Overheated; 2. Power cut; 3. Reach limitation.	1. Cooling around 20 minutes motor will work normally; 2. Restart after connect power; 3. Check if need adjust the limitation or not.
5	Abnormal sound during working	Outer tube is too long leads brackets in both sides too tight	If idler is active, cut the outer tube a little bit