

SLIDING GATE MOTOR UP TO 400 KG 24VDC

ERMIS-4



ERMIS-4 SLIDING GATE MOTOR UP TO 400KG

1. Important Safety Information

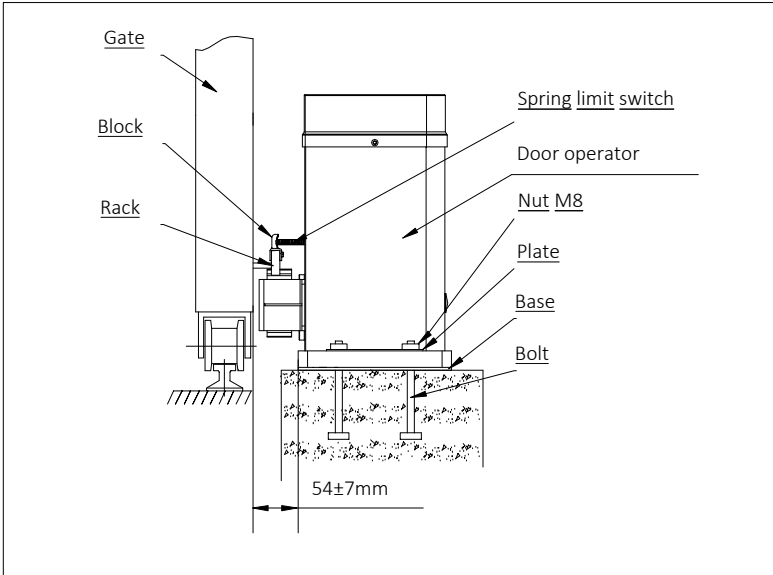
Carefully read and follow all safety precaution and warnings before attempting to install and use this operator, incorrect installation can lead to severe injury.

- The gate operator should be installed by a qualified technician; otherwise, serious personal injury or property damage may occur.
- When opening or closing the gate, do not attempt to walk or drive through the gate.
- Children should not be allowed to play near or operate automatic gates.
- The automatic gate operator must be grounded.
- Install the gate operator on the inside of the property, DO NOT install it on the outside of the property where the public has access to it.
- Be careful when in close proximity to moving parts where hands or fingers could be pinched.
- Do not allow control devices to be placed so that a person can access them by reaching through the gate.
- In the event of power failure, an emergency release key allows you to operate the gate manually.
- The operator should be switched off before repairing it or opening its cover.
- Our company reserves the right to change the design and specification without prior notification.

2. Main Technical Parameters

Model	ERMIS - 4
Power supply	AC220(1±10%), 50Hz
Motor	24V 100W
Gear teeth	16T
Gate moving speed	10m/min
Output torque	8N.m
Output speed	50rpm
Gate weight	≤300kg
Built-in battery	12V 2.6Ah*2
Limit switch	Spring limit switch

ERMIS - 4 SLIDING GATE MOTOR UP TO 400KG

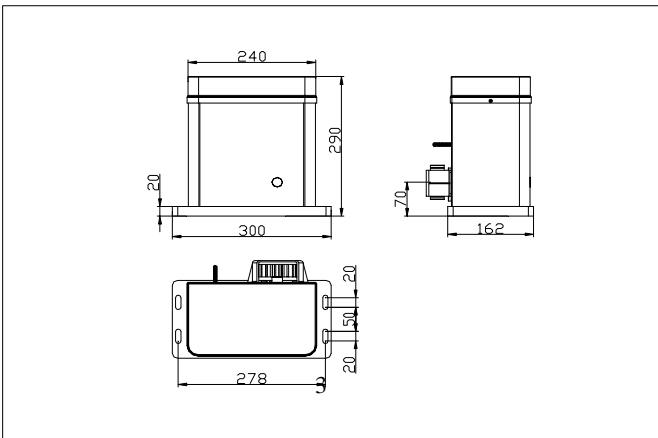


3. Installation and Adjustment

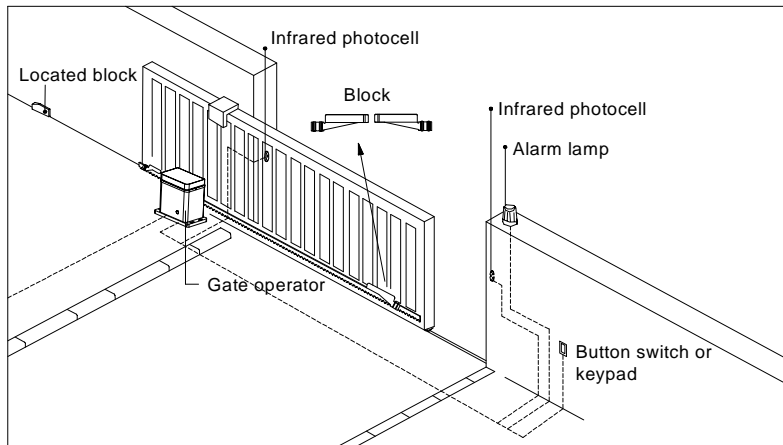
The ERMIS-4 rack-driven gate operator operates by forcing a drive rack past a drive gear. The entire configuration is shown in Fig.1. The gate operator must be installed on the inside of the gate.

Gate preparation

Be sure the gate is properly installed and slides smoothly before installing the sliding gate operator. The gate must be plumb, level, and move freely.



ERMIS-4 SLIDING GATE MOTOR UP TO 400KG



Conduit

In order to protect the wires, use PVC conduit for wires, conduit must be set into the concrete when it is poured. Wires within the conduit shall be located or protected so that no damage can result from contact with any rough or sharp part.

Concrete pad

The base unit of the gate operator requires a concrete pad in order to maintain proper stability. The concrete pad should be approximately 300mm x 200mm x 200mm deep in order to provide for adequate operation. The pad should be 70mm above finish grade. Be sure to locate the pad so that it will not interfere with the gate.

Bolts

You can use the bolts and nuts that are provided with the operator see Fig.2. These anchors must be set into the concrete when it is poured, or you can use wedge expansion bolts. Operator base

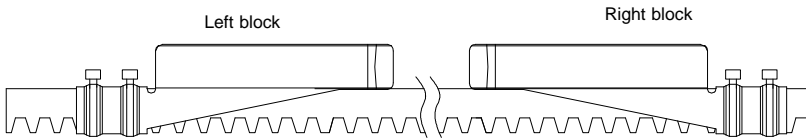
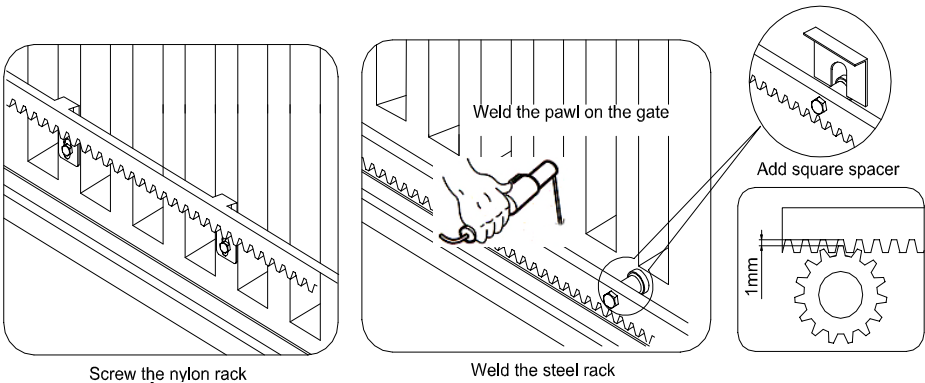
Mount the gate operator base to the concrete pad. Verify that the operator is leveled properly. Operator

Mount two pieces of plates and gate operator to the base using nuts and washers.

ERMIS-4 SLIDING GATE MOTOR UP TO 400KG

Installing the rack

- Manually move the gate to its closing position.
- Place the three threaded pawls (in the same package with rack) on the rack element.
- Lay the first piece of rack on the gear and weld the first threaded pawl on the gate.
- Move the gate manually, checking if the rack is resting on the gear, and weld the second and third pawls.
- The space between rack and gear is about 1mm.
- Bring another rack element near to the previous one. Move the gate manually and weld the three pawls as the first rack, thus proceeding until the gate is fully covered.
- When the rack has been installed, to ensure it meshes correctly with the gear.
- If necessary, assemble the spacer between the rack and pawl to synchronise the teeth of the two rack elements and keep racks in a straight line.



Screw the block on steel rack.

ERMIS - 4 SLIDING GATE MOTOR UP TO 400KG

Spring limit switch

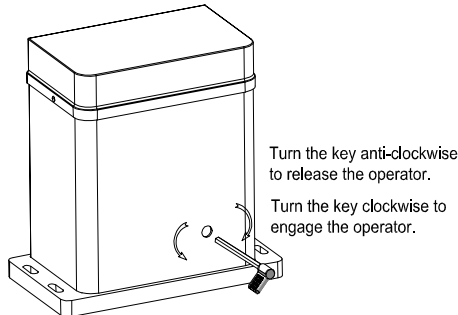
Install the block as shown in Fig.5. Release the gear clutch with the key and push the sliding gate manually to pre-determine the position, screw the block to the rack and then tighten the gear clutch with the key. Moving the gate electrically, adjust the block to the proper position until the position of the opening and closing meet the requirement.

Manual operation

In case of power failure use manual release key to open or close gate manually, use the release key as follow:

- Fit the release key in the lock.
- Turn the key 6-8 circles anticlockwise see Fig.6.
- Open or close the gate manually.
- Turn the key 6-8 circles clockwise to engage the gate operator.

Note: If the gate bumps the mounting post and cannot be electric opened, move the gate a few inches by hand, thus you can release the gate with the key, open or close the gate manually.



4. Final Check

Check the power supply, grounding and wiring before running the device. Release the gear clutch with the release key to determine whether or not the gate can be moved manually. If everything is in good working order, tighten the clutch with the key. Switch on the power and run the device to ensure that the gate is sliding smoothly. Adjust the block until the gate opened and closed properly at the limited positions.

5.Maintenance

Keep operator clean at all times.
Ensure the operator is well earthed, and correctly terminated.
Regularly grease the wheels and axles to ensure the gate moves smoothly.



7. DECLARATION OF CONFORMITY

In accordance with Annex II B of Machinery Directive 2006/42/CE , the importer L.PSARROS AND SIA OE



With the present we declare that the following products:
ERMIS-8 / ERMIS-4
eis according to European Directives requirements of EMC 2006/42/EC and LVD Directive 2014/35/EU, satisfies all the applicable standards to the product within these directives as follows:

Applicable standards: EN 60335-1:2012/A13:2017
EN 60335-2-103:2015
EN ISO 12100:2010
EMC Directive 2014/30/EU
Certificate No.: TMC170417101-E
Applicable Standards: EN 55014-1:2017
EN 55014-2:2015
EN 61000-3-2:2014
EN 61000-3-3:2013

Athens, 29.01.2018

Profelmnet
Λ. ΨΑΡΡΟΣ ΚΑΙ ΣΙΑ Ο.Ε.
ΕΙΣΑΓΩΓΕΣ – ΚΑΤΕΣΤΡΑΦΕΣ – ΜΕΚΤ. ΥΛΙΚΟΥ
ΑΓ. ΔΗΜΗΤΡΙΟΥ 286Α, Τ.Κ. 11527, ΑΓ. ΔΗΜΗΤΡΙΟΥ
ΑΦΜ: 900845045 – Α.Ο.Υ. ΑΓ. ΔΗΜΗΤΡΙΟΥ
ΑΡ. Γ.Ε.ΜΗ. 142769401000
ΤΗΛ.: 210 9850244 - FAX: 210 9823264

THE POWER TO MOVE