

5651 USER MANUAL

EASYTECH PRO





SERIES 56

Series 56 is a complete series of PROFELMNET control boards, with integrated Bluetooth technology. Compatible with Profelmnet Easy Tech PRO application that is available in IOS and Android. The installer is able to access and adjust all the functions of the control board through the smartphone, tablet or laptop.

The models of series 56 are :

- 5633** control board for sliding and swing gate, roller shutter, barrier 230VAC
- 5650** control board for sliding and swing gate, barrier, pergolas 24V
- 5614** control board for double motors 230VAC
- 5651** control board for double motors 24V

CE Declaration of Conformity

The manufacturer **L. PSARROS & SIA OE** declares that the products **5650, 5633, 5614, 5651** are according to European Directives requirements of **RADIO EQUIPMENT DIRECTIVE (RED) 2014/53/EU** and **ELECTROMAGNETIC COMPATIBILITY EMC 2004/108/EC**

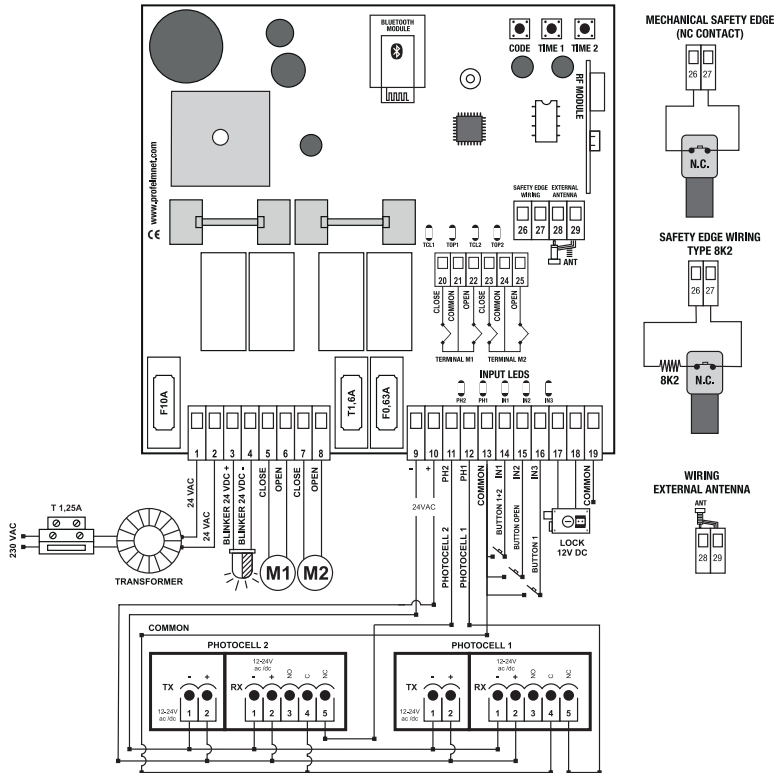
Profelmnet
Λ. ΨΑΡΡΟΣ ΚΑΙ ΣΙΑ Ο.Ε.
ΕΙΣΑΓΩΓΕΣ – ΚΑΤΕΣΤ. ΗΛΕΚΤ. ΥΛΙΚΟΥ
ΑΓ. ΔΗΜΗΤΡΙΟΥ 286Α Τ.Κ. 11342 ΑΓ. ΔΗΜΗΤΡΙΟΥ
ΑΦΜ: 800845047 ΔΟΥ: ΑΓ. ΔΗΜΗΤΡΙΟΥ
ΑΡ. ΓΕΜΗ: 142769401000
ΤΗΛ.: 210 9650244 / FAX: 210 9623264

Labros Psarros
Electronics Engineer
Technical Director

Warning for the installer

1. **ATTENTION!** To ensure the safety of people, it is important that you read all the following instructions. Incorrect installation or incorrect use of the product could cause serious harm to people
2. Carefully read the instructions before beginning to install the product
3. This product was designed and built strictly for the use indicated in this documentation. Any other use, not expressly indicated here, could compromise the good condition/operation of the product and/or be a source of danger
4. Store these instructions for future reference
5. Before attempting any job on the system, cut out electrical power
6. Make sure that a differential switch with threshold of 0.03 A is fitted upstream of the system
7. Do not in any way modify the components of the automated system
8. Do not allow children or adults to stay near the product while it is operating
9. Keep remote controls or other pulse generators away from children, to prevent the automated system from being activated involuntarily
10. The user must not attempt any kind of repair or direct action whatever and contact qualified personnel only
11. Profelmnet as a manufacturer reserves the right to make changes to the product without notice
12. Anything not expressly specified in these instructions is not permitted
13. It is essential to use a T1.25 A fuse on the primary coil of the power transformer.
14. It is mandatory to ground the metallic parts of the motor. Connect the motor grounds to the power supply ground.

5651 Control board for double motors 24V



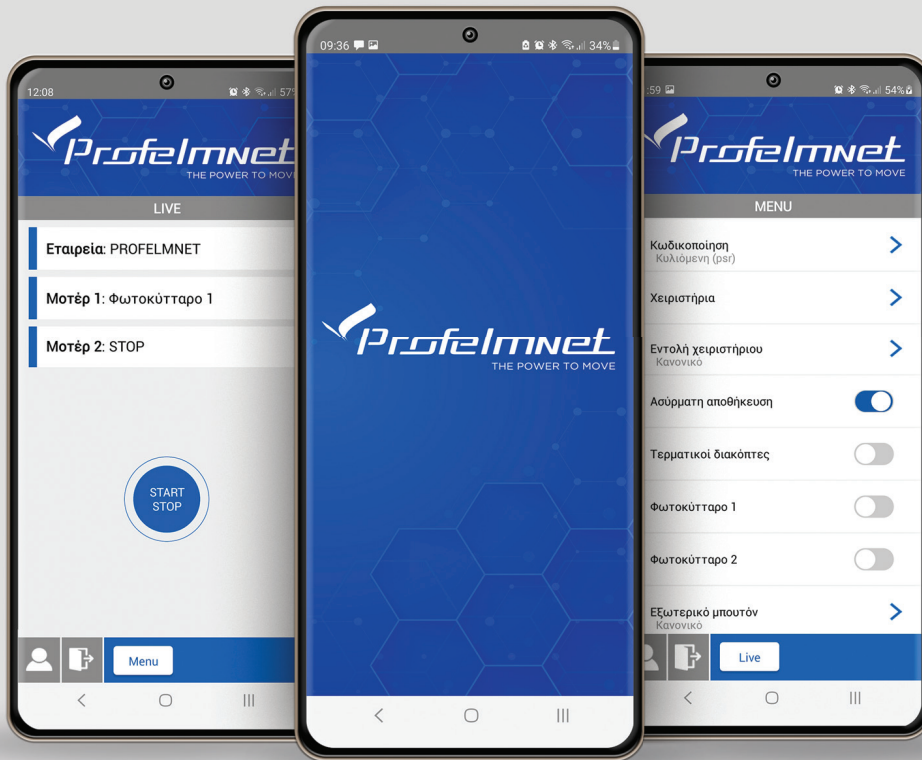
TECHNICAL CHARACTERISTICS

Power Supply	24VAC/DC
Motor Power	400W in total
Box Dimensions	25cm X 19.5cm X 10cm
Board Dimensions	13cm X 13.5cm X 4.5cm
Trasformer Primary Side Fuse	T1.25A
Power Supply Fuse	F10A
Photocell Fuse	F0.63A
Lock - Flash Fuse	T1.6A
Flash Power Supply	24VDC
Photocells Power Supply	24VAC/DC
Lock Power Supply	12VDC/3A
Board Memory	removable up to 300 remotes
Temperature	-20oC + 60oC

ELECTRICAL CONNECTIONS

1	+24VAC/DC	13+15	Contact Magnetic Loop N.O
2	-24VAC/DC	13+16	Contact Button 1 - N.O
3-4	Light 24VDC	17+18	Lock 12VDC 3A
5	Open Motor 1	19	Common
6	Close Motor 1	20+21	Close Terminal Switch Motor 1 - N.C
7	Open Motor 2	21	Common Terminal Switch Motor 1
8	Close Motor 2	21+22	Open Terminal Switch Motor 1 - N.C
9	Power Supply - 24VAC/DC	23+24	Close Terminal Switch Motor 2- N.C
10	Power Supply + 24VAC/DC	24	Common Terminal Switch Motor 2
11+13	Contact Photocell 2 NC	24+25	Open Terminal Switch Motor 2 - N.C
12+13	Contact Photocell 1 NC	26+27	Safety Edge NC /8K2
13	Common	28	External Antenna 433,92MHz
13+14	Contact Button 1+2 - N.O	29	Shield Antenna 433,92MHz

ACTIVATE INTERNET AND BLUETOOTH  OF YOUR DEVICE
DOWNLOAD THE PROFELMNET EASYTECH PRO APPLICATION

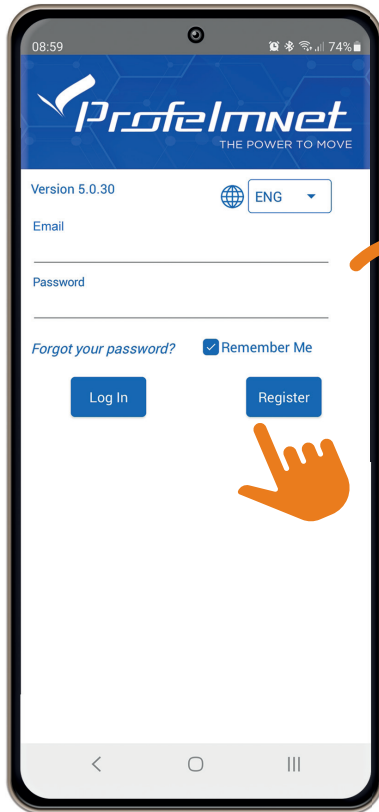


ProfelmNet
EasyTech Pro



REGISTER

FOLLOW THE STEPS TO REGISTER



08:59

Profelmnet
THE POWER TO MOVE

Version 5.0.30

ENG

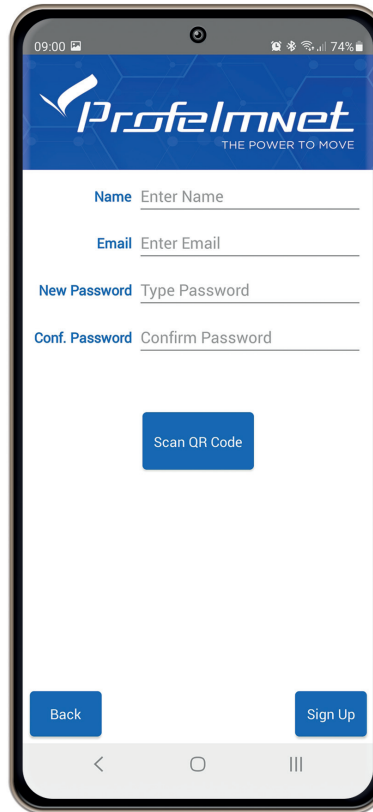
Email

Password

Forgot your password? ☒ Remember Me

Log In Register

An orange hand icon is pointing to the Register button.



09:00

Profelmnet
THE POWER TO MOVE

Name Enter Name

Email Enter Email

New Password Type Password

Conf. Password Confirm Password

Scan QR Code

Back Sign Up

- 1 Choose the language
- 2 Press Register & fill in your personal data
- 3 Scan QR code. Find the QR code on the board & scan it
- 4 Press sign up to finish



08:59

Profelmnet
THE POWER TO MOVE

Version 5.0.30

ENG

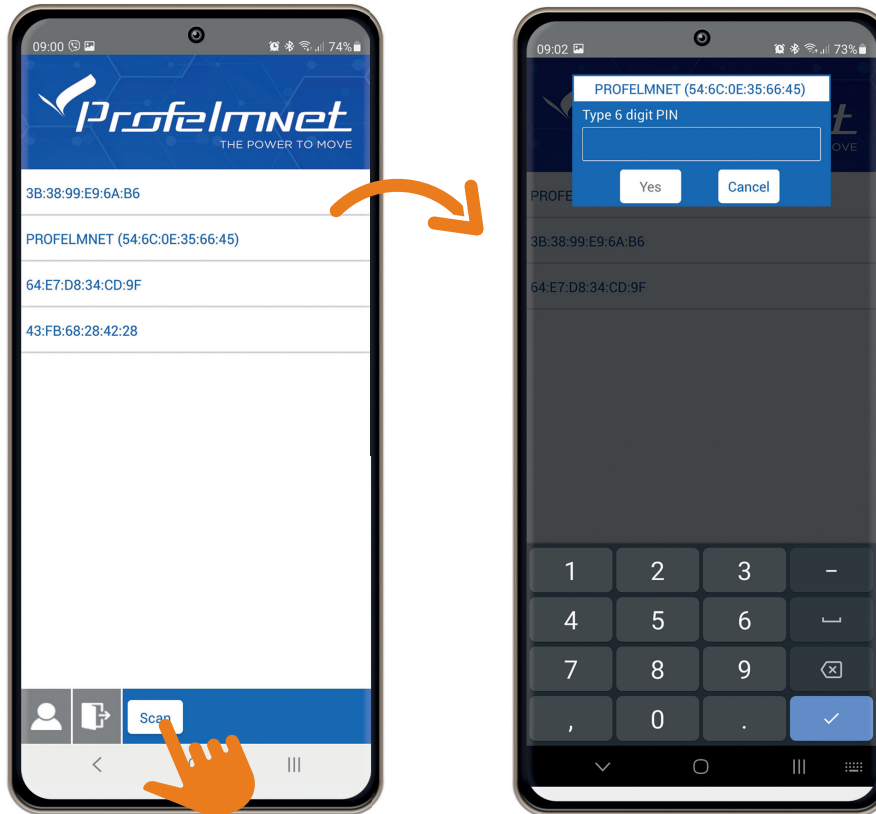
Email
info@profelmnet.com

Password
.....

Forgot your password? ☒ Remember Me

Log In Register

CONNECTION with the board

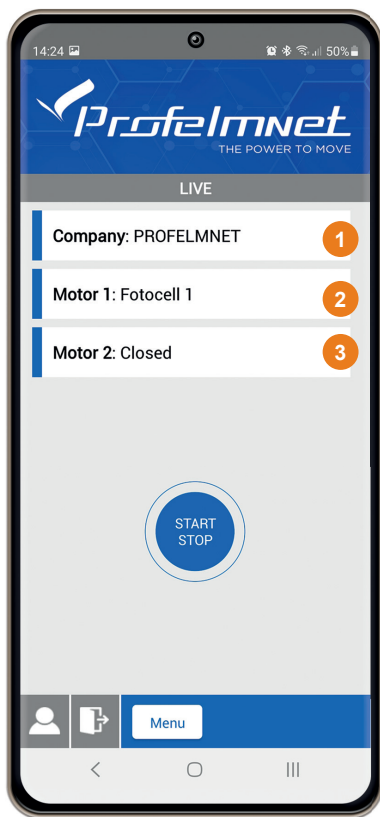


- 1 Press scan to find the PROFELMNET device
- 2 Choose the PROFELMNET device
- 3 Type the 6 Digit PIN

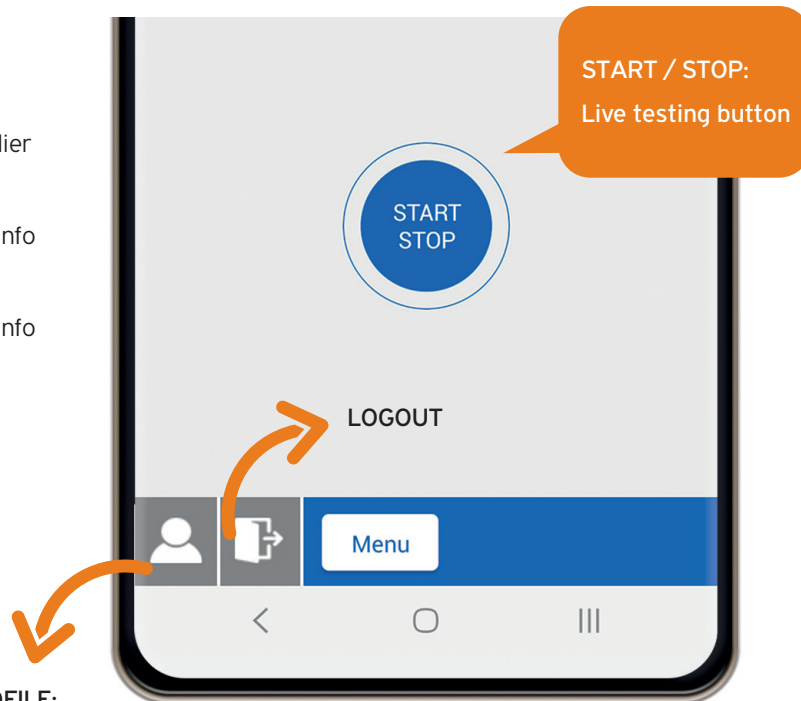
During the first connection, type 000000 PIN and then type your personal 6-digit PIN.

i The PIN code is your personal security number. Without this PIN code, you can not access the board. Avoid using simple easy PIN codes (i.e 111111)

LIVE SCREEN

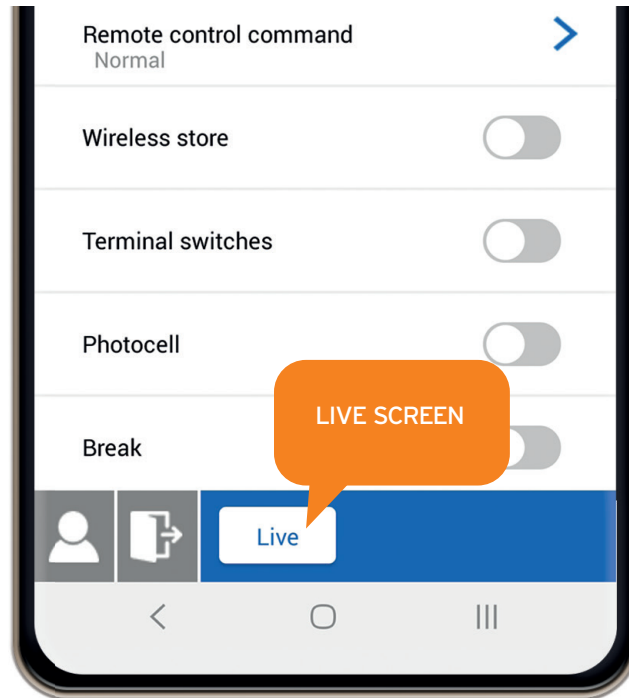
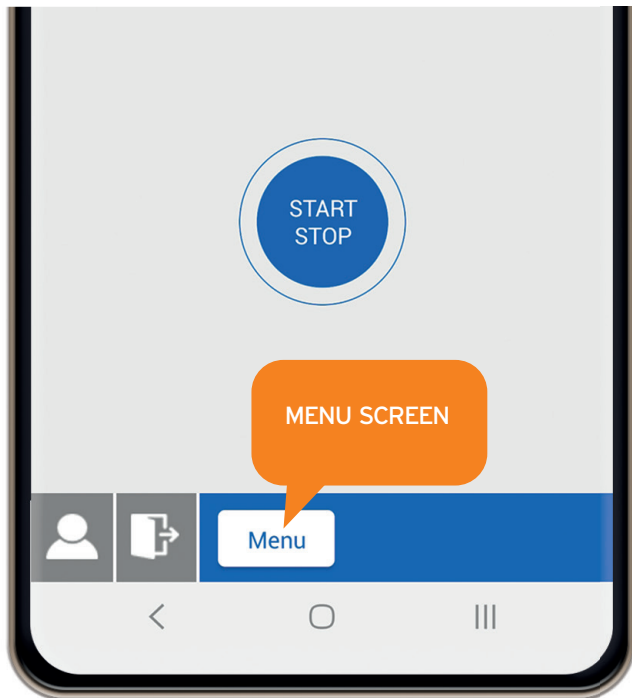


- 1 Company:
Board Supplier
- 2 Motor 1:
Installation Info
- 3 Motor 2:
Installation Info

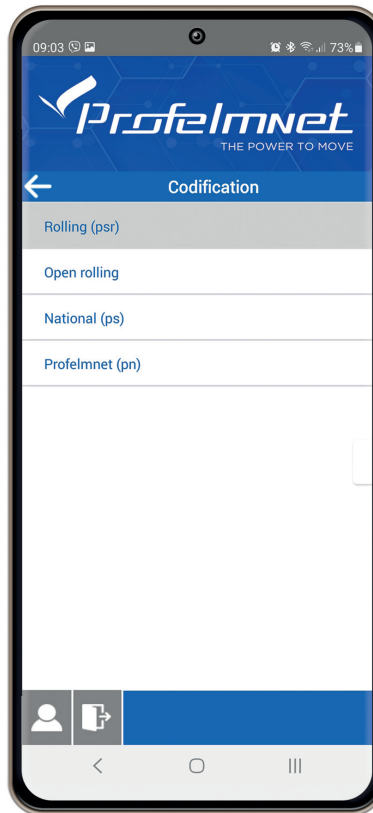
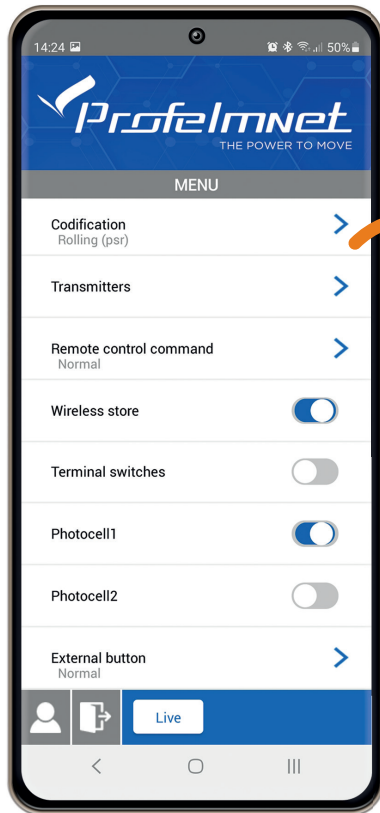


USER PROFILE:
Edit your personal data

SWITCH LIVE SCREEN TO MENU SCREEN

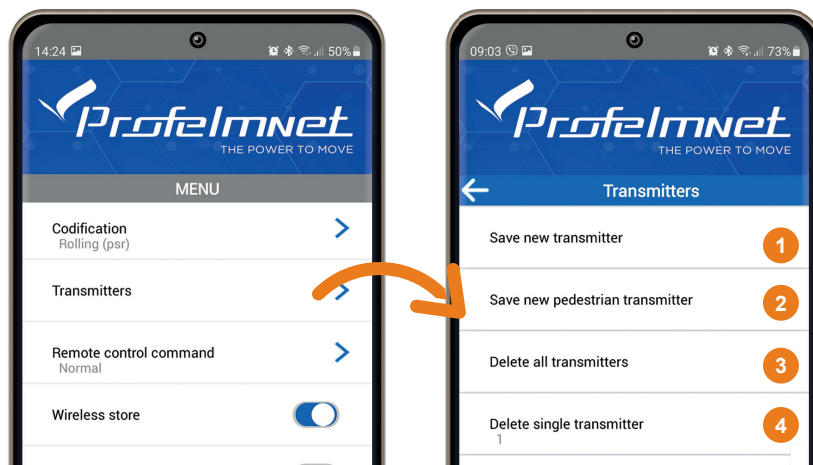


MENU: Codification



Codification: Select based on the installation's transmitters

MENU: Transmitters



- 1 **Save new transmitter:**
Press the transmitter button you want to save
- 2 **Save new pedestrian transmitter:**
Press the transmitter button you want to save as pedestrian
- 3 **Delete all transmitters:**
YES/NO
- 4 **Delete single transmitter:**
Choose the number of transmitter to DELETE.

Adding a new remote remotely: The motor is fully closed or open. Press a working remote button (already in memory) to start the motor working and hold it pressed until the motor stops. When it stops, leave it and press the new remote button immediately. The new remote is saved. Repeat steps to program more remotes remotely. When the memory is full (300 remotes) you cannot add more new remotes

TIP

COMPATIBLE REMOTES: Based on the model you have

PS: Fixed Code 433,92MHz. Compatible remotes are fixed code 433,92MHz

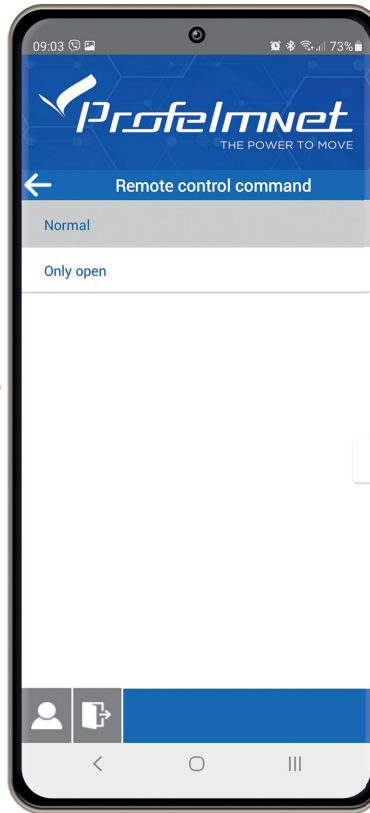
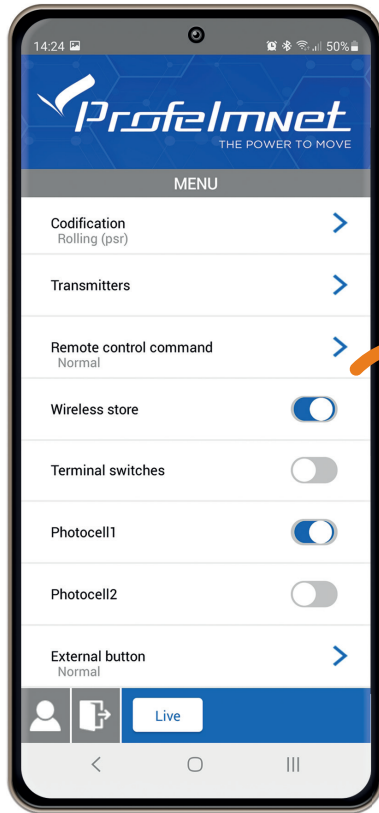
PSR/PN: Rolling Unique Code 433,92MHz. Compatible Remotes with same Unique Rolling Code.

WHERE YOU FIND THE UNIQUE ROLLING CODE OF THE BOARD: On the control board, there is a white productions sticker by Profelmnet. You will find the Unique Rolling Code, with which you search for compatible controls.

TIP

ADDING A NEW TRANSMITTER WITH THE CONTROL BOARD CODE BUTTON: Press the CODE button and the RED indication light goes ON. Leave it and during the next 3 seconds, press the desired transmitter channel button until the RED indication light blinks and goes OFF. The new transmitter is saved. Follow the same procedure to program more (up to 300 remotes) new remotes.

MENU: Remote control Command

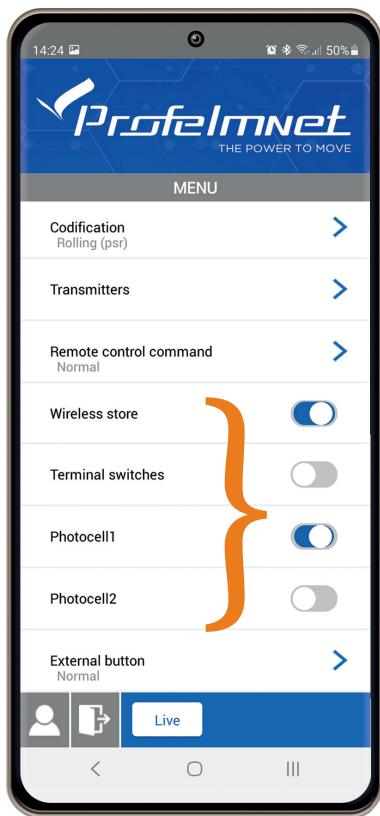


Remote control command

Normal:
START-STOP-CLOSE

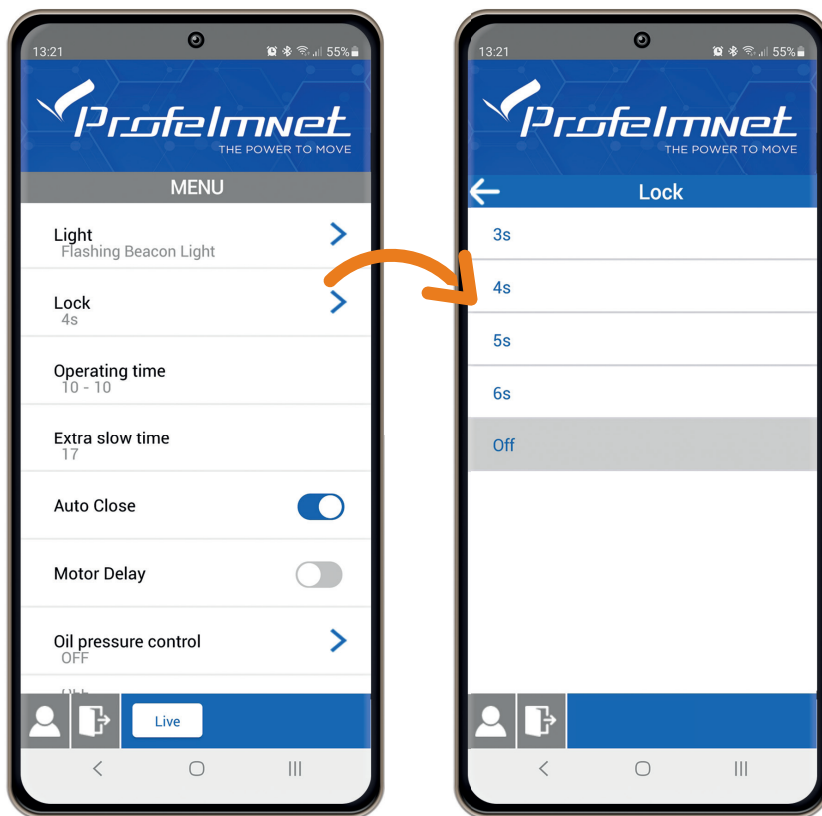
Only Open

MENU: Settings ON/OFF

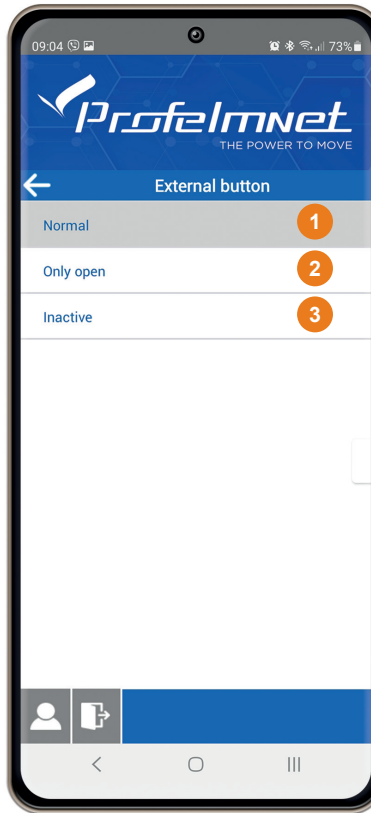
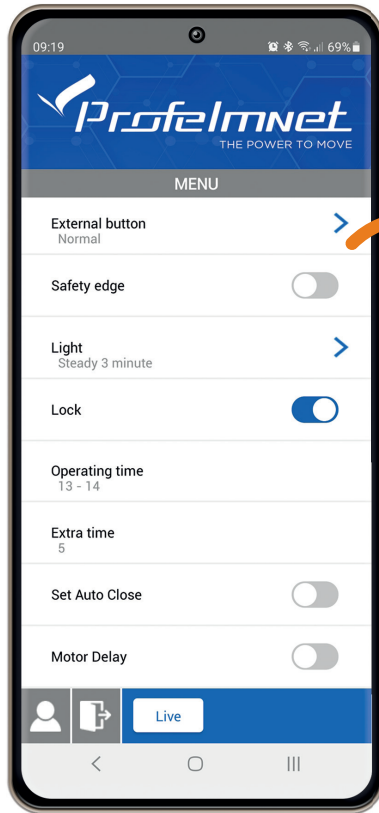


SETTINGS - CONFIGURATION - 5651

MENU: Lock



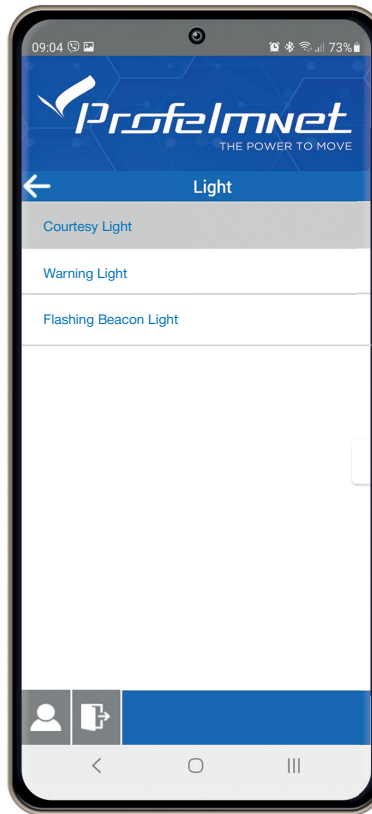
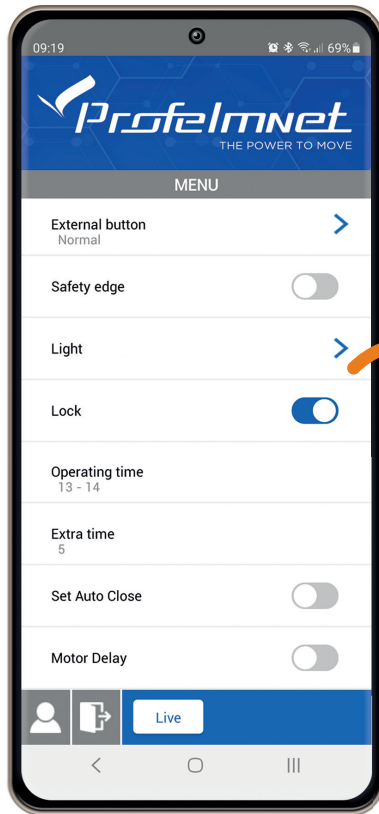
MENU: External Button



External Button: Select based on the installation

- 1 NORMAL
- 2 ONLY OPEN
- 3 INACTIVE

MENU: Flash

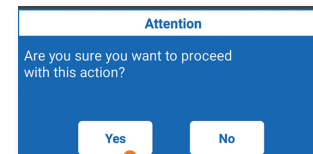


COURTESY LIGHT: The light is steady for 3 minutes after the last command.

WARNING LIGHT: The light indicates the status of the gate.
Light Off, gate is closed
Light On, gate is open
Slow Flashing, gate is opening
Fast Flashing, gate is closing

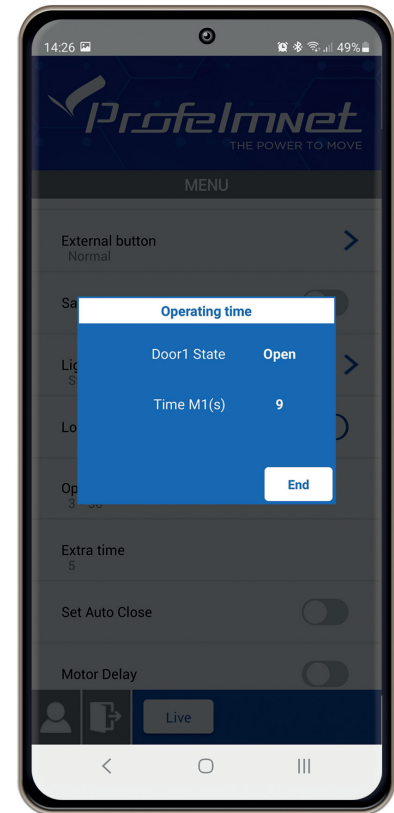
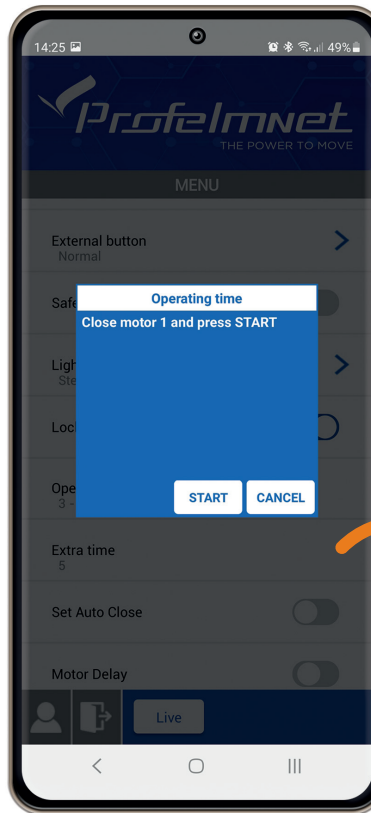
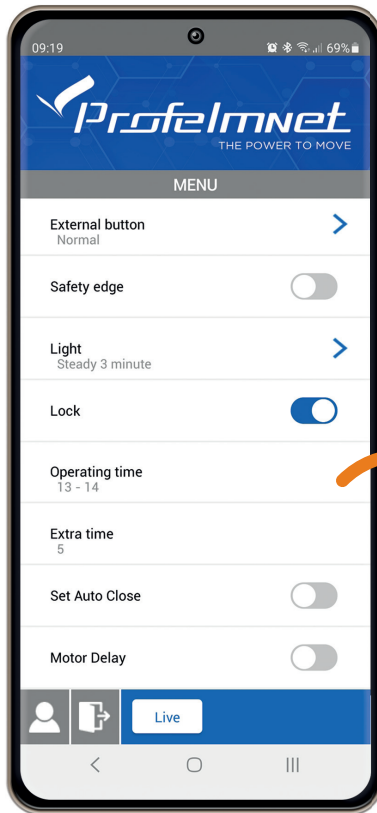
FLASHING BEACON LIGHT: The light is flashing during the cycle of the motor.

SELECTION CONFIRMATION



MENU: Operating time - motor 1 & motor 2

Follow the application steps



Operating Time: **FROM THE CONTROL BOARD**

**SAME WORKING TIME FOR OPEN + CLOSE
FOR EACH LEAF**



*Before setting the working time of the motors, make sure that you have installed **PHYSICAL STOPS** at the closing and opening of each leaf, otherwise the control board cannot be adjusted correctly. In case there are no physical stops, your motor must have built-in **MECHANICAL STOPS**.*

1ST METHOD: THROUGH CONTROL BOARD

- 1 Use the Buttons **TIME 1 + TIME 2**
BOTH LEAVES ARE CLOSED.

Press and hold pressed the **TIME 1** button until the first leaf is fully opened.

Press and hold pressed the **TIME 2** button until the second leaf is fully opened.

The operating time of the two Motors have now been set.

2ND METHOD: THROUGH REMOTE

- 2 Use the saved remote or the external button
BOTH LEAVES ARE CLOSED.

Press the **TIME 1 + TIME 2** buttons simultaneously. The red LED indicator starts flashing.

Press the remote.

Motor 1 opens.

When Motor 1 is fully open, press the remote again.

Motor 1 stops and Motor 2 starts opening automatically.

Press the remote when Motor 2 is fully open.

The operating time of the two Motors have now been set.

Operating Time: **FROM THE CONTROL BOARD**

DIFFERENT WORKING TIME FOR OPEN + CLOSE FOR EACH LEAF

1ST METHOD: THROUGH CONTROL BOARD

1 Use button TIME 1 BOTH LEAVES ARE CLOSED

Press the CODE + TIME 2 buttons simultaneously. The red LED indicator starts flashing quickly.

Press the TIME 1 once.

The Motor 1 opens.

When Motor 1 is fully open, press the TIME 1 once.

Motor 1 stops and after 1 second, Motor 2 starts opening automatically.

When Motor 2 is fully open, press the TIME 1 once.

Motor 2 stops and after 1 second, Motor 2 starts to close automatically.

When Motor 2 completely closed, press the TIME 1 once.

Motor 2 stops and after 1 second, Motor 1 starts to close automatically.

When Motor 1 completely closed, press the TIME 1 button once.

The operating time of the two Motors have now been set.

2ND METHOD: THROUGH REMOTE

1 Use the saved remote or the external button BOTH LEAVES ARE CLOSED

Press the CODE + TIME 2 buttons simultaneously. The red LED indicator starts flashing quickly.

Press the remote once.

The Motor 1 opens.

When Motor 1 is fully open, press the remote once.

Motor 1 stops and after 1 second, Motor 2 starts opening automatically.

When Motor 2 is fully open, press the remote once.

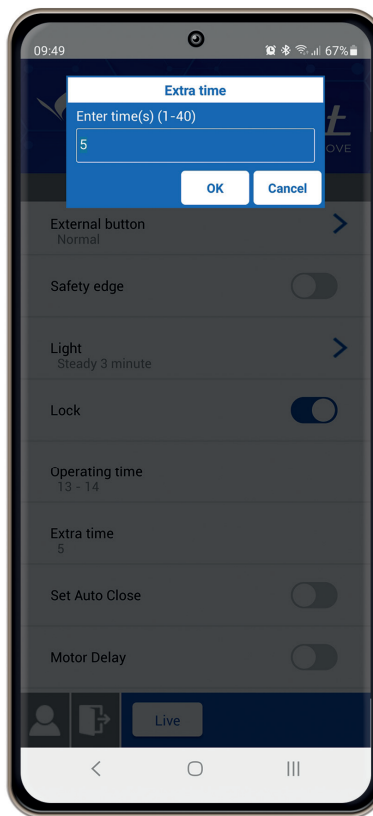
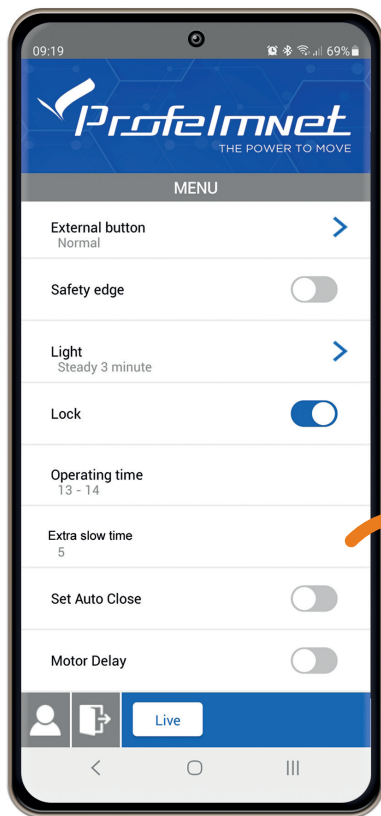
Motor 2 stops and after 1 second, Motor 2 starts to close automatically.

When Motor 2 completely closed, press the remote once.

Motor 2 stops and after 1 second, Motor 1 starts to close automatically.

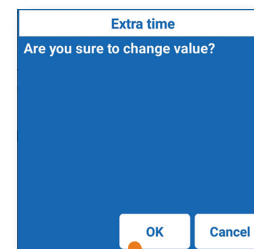
When Motor 1 completely closed, press the remote once.

MENU: Deceleration time

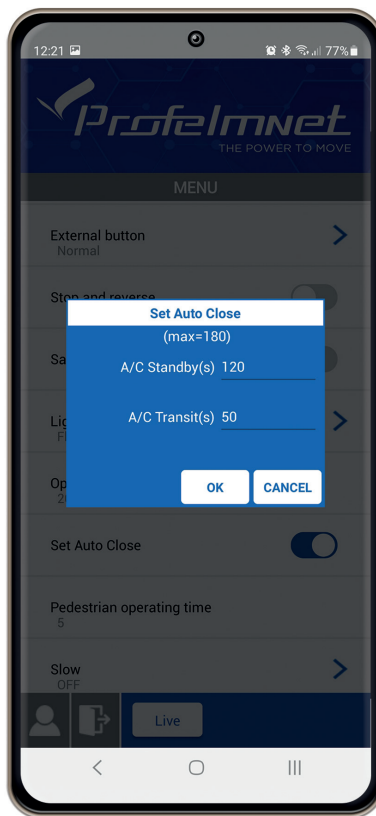
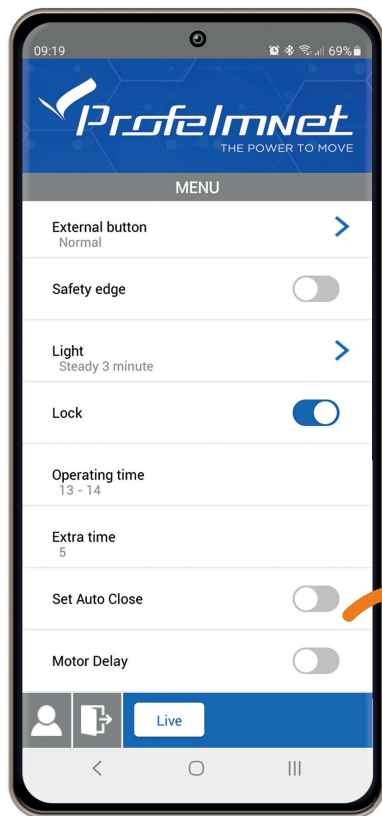


Deceleration time:
Select based on the installation

SELECTION CONFIRMATION



MENU: Set auto - close



- **Auto-Close Stand-by:**
The time when the gate is open and the photocell is not activated
- **Auto close Transit:**
The time when gate is open after the photocell is activated



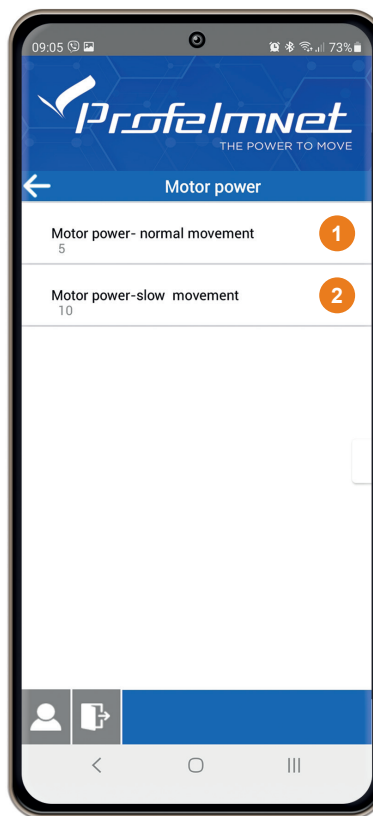
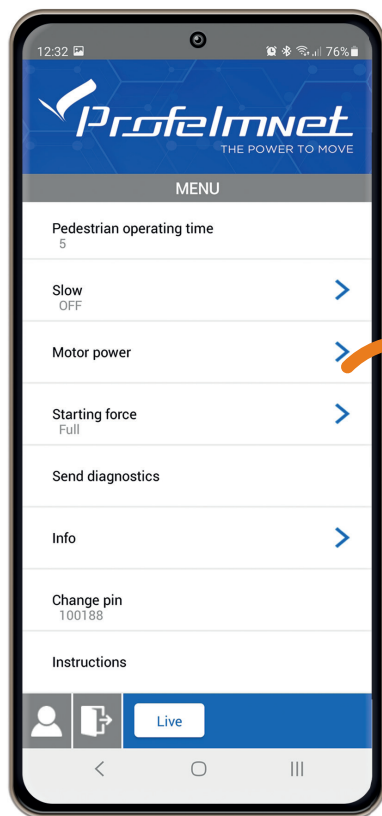
SET TIME:

Set time on each field in seconds

If you want to edit the time, you need to disable the AUTO-CLOSE and re enable it

OFF ☐ ON ☒

MENU: Motor Power



- 1 Motor power - normal movement:
Enter value
- 2 Motor power - slow movement:
Enter value

ENTER VALUE:

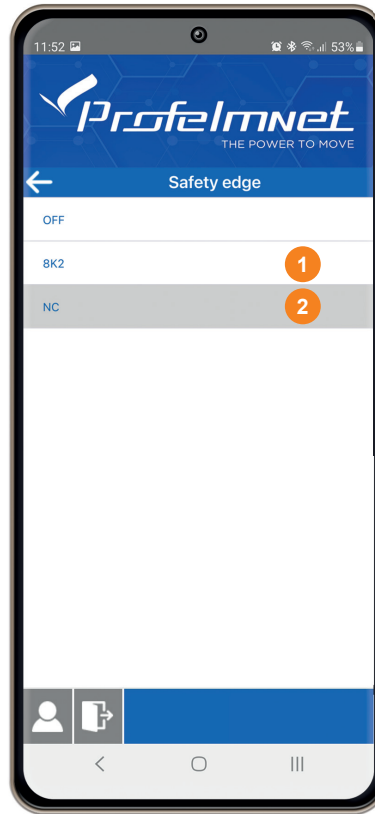
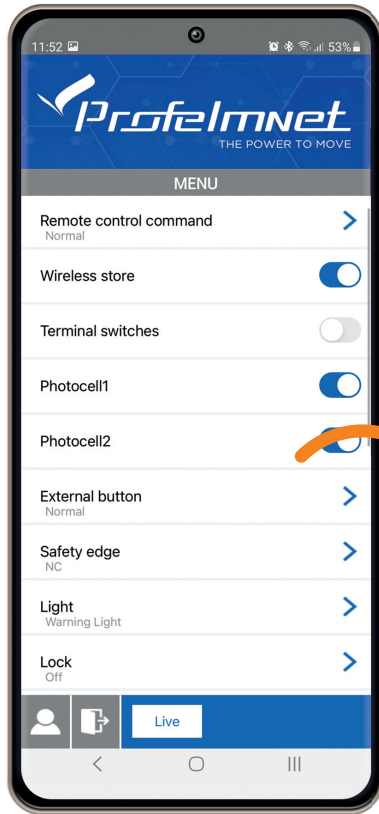
Motor power- normal movement

Enter value (1-10)

OK Cancel



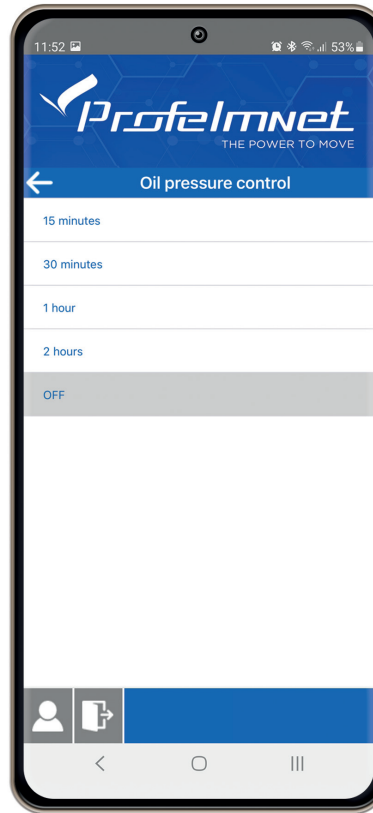
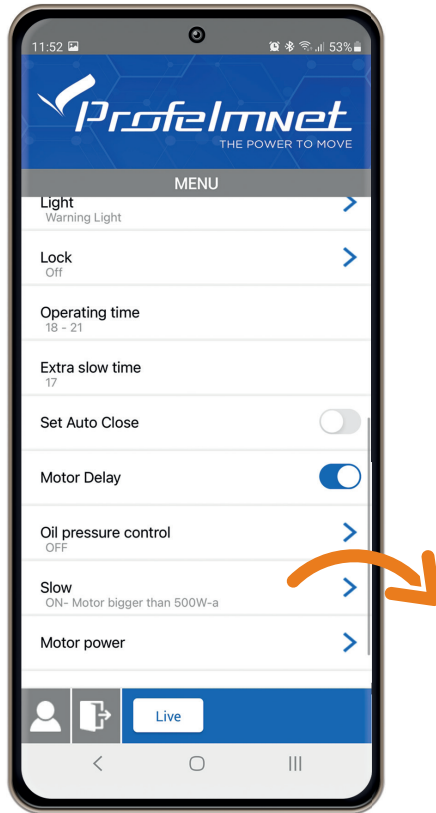
MENU: Safety Edge



Once the safety contact is activated, the door stops and moves backward by 10 centimeters.

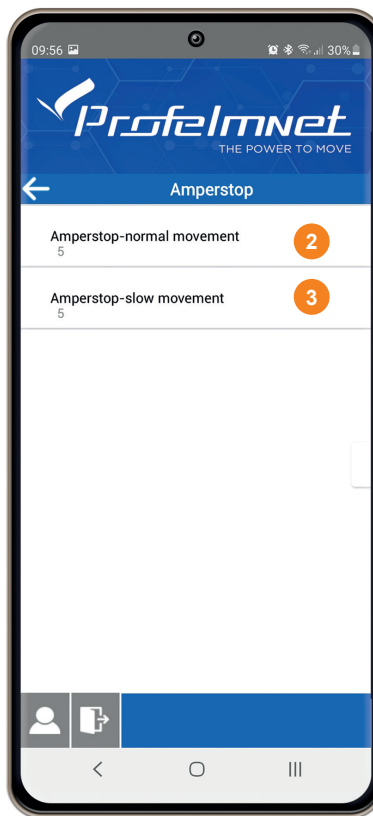
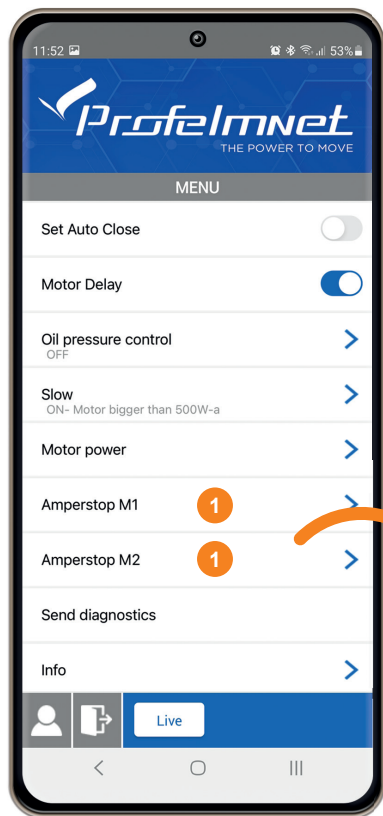
- 1 8K2:** An 8.2 kΩ resistor is used to monitor the contact.
- 2 Closed contact:** Use an NC (Normally Closed) contact for monitoring.

MENU: Pressure Control



Select in case of
hydraulic motors

MENU: Amperstop



- 1 Amperstop M1 + M2
- 2 Amperstop in normal movement
- 3 Amperstop in slow movement

ENTER VALUE

Amperstop-normal movement

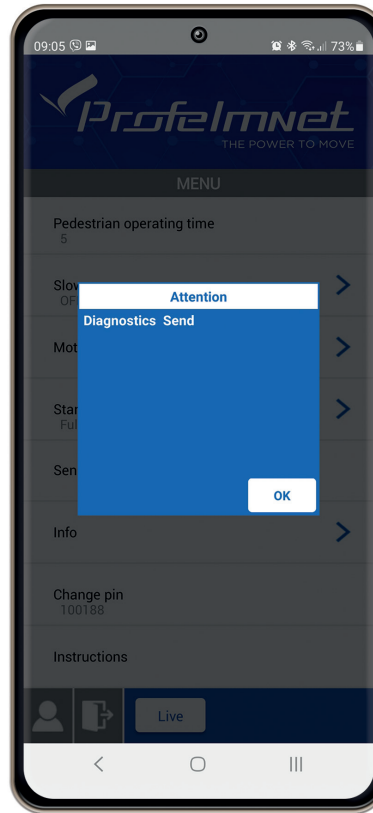
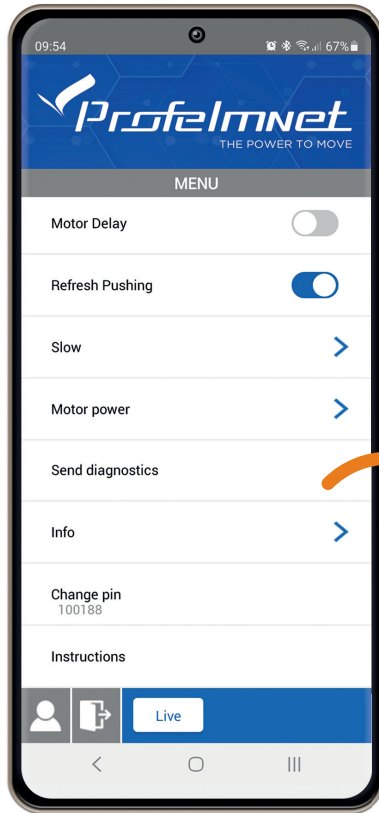
Enter sensitivity (1-10)

5

OK Cancel

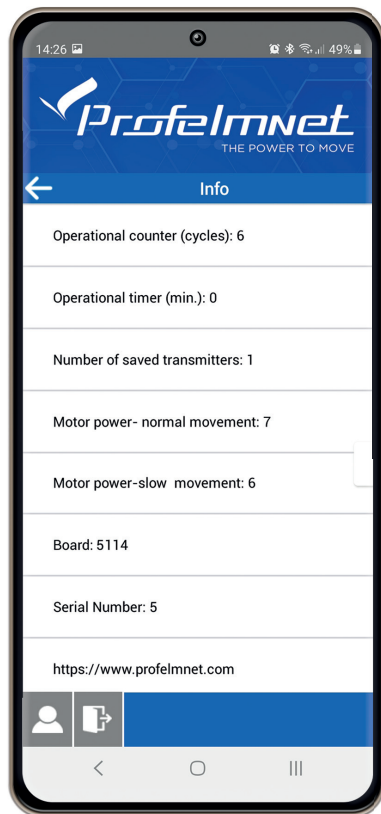


MENU: Send Diagnostics



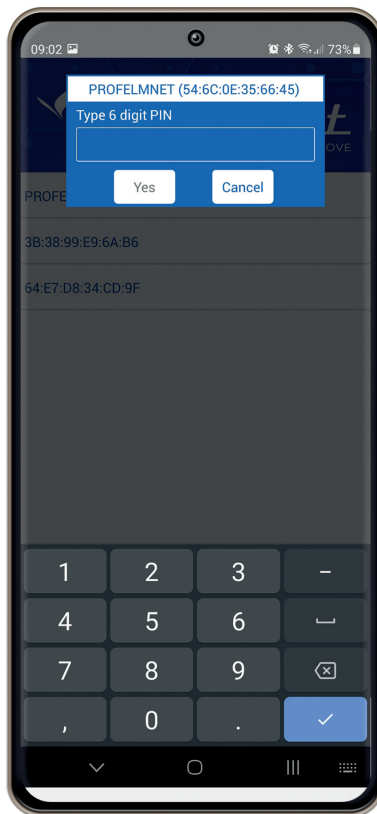
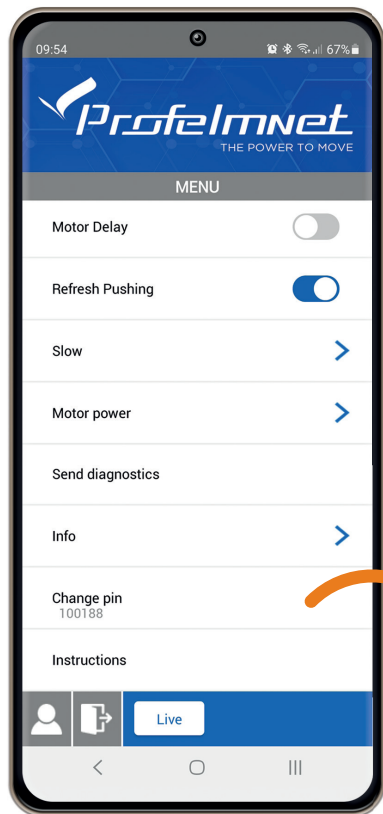
In case of technical support, send diagnostics to the Profelmnnet technician

MENU: Info



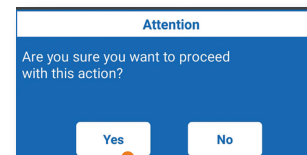
All information of the board

MENU: Change PIN



CHANGE PIN

SELECTION CONFIRMATION





www.profelmnet.com